

MONTHLY MEMBERSHIP PROGRESS REPORT

District 321A2

Results as of: 5/31/2024

GMT:

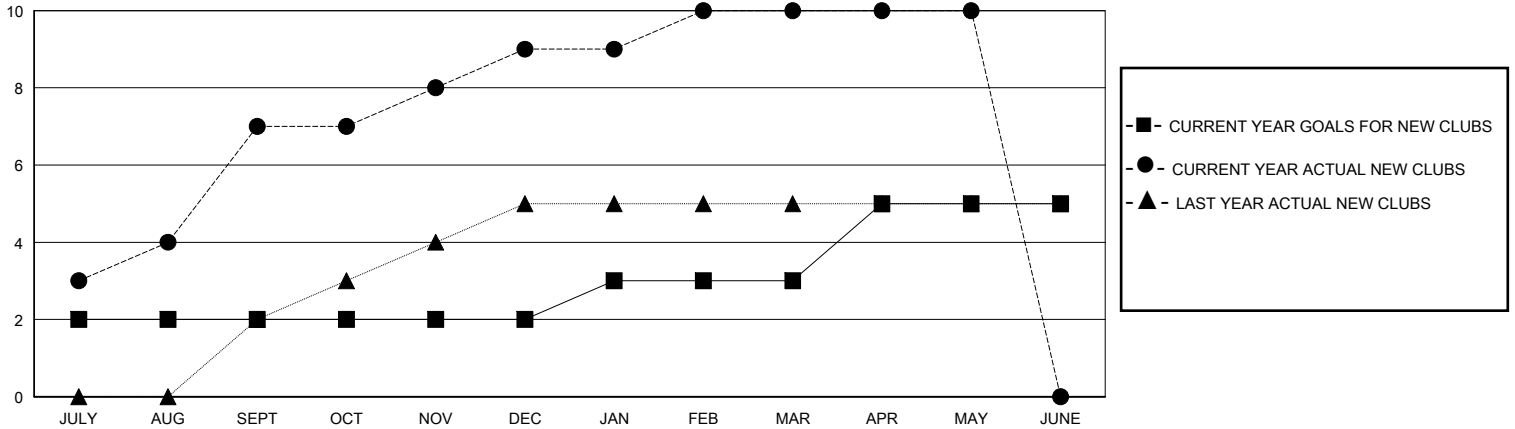
LOCATION INDIA

GMT CA

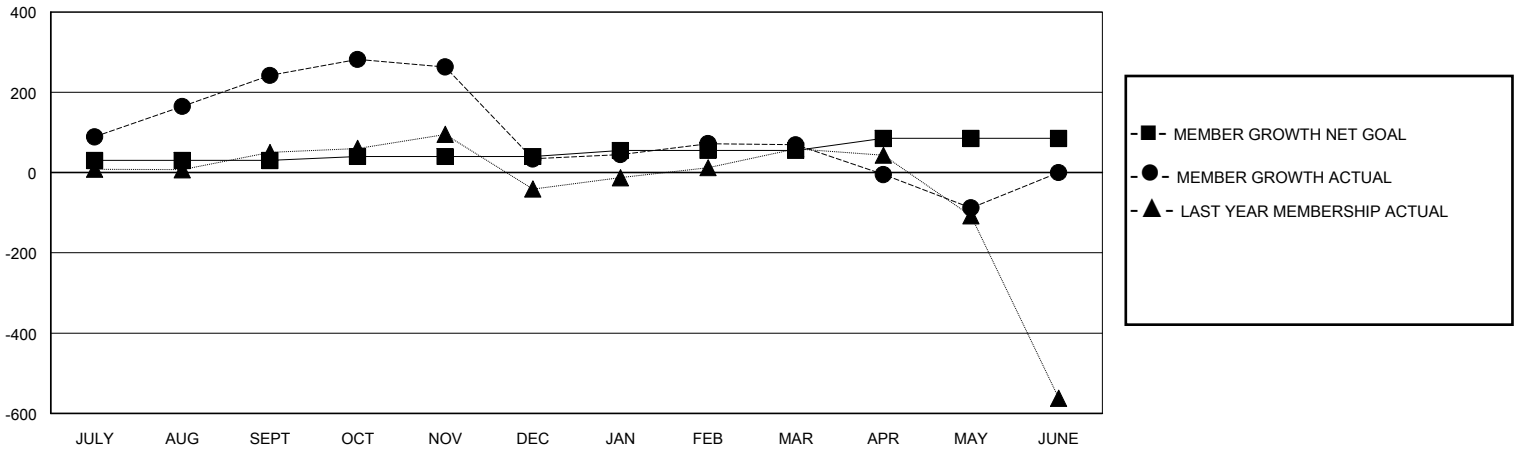
Clubs			
RESULTS FOR 2023-2024			
QUARTER	NEW CLUB GOAL	NEW CLUBS	DROPPED CLUBS
JULY/AUG/SEPT	2	7	2
OCT/NOV/DEC	0	2	3
JAN/FEB/MAR	1	1	0
APR/MAY/JUNE	2	0	1

Members			
RESULTS FOR 2023-2024			
QUARTER	MEMBER GROWTH NET GOAL	MEMBER GROWTH ACTUAL	DROPPED MEMBERS ACTUAL (including transfers)
JULY/AUG/SEPT	30	396	124
OCT/NOV/DEC	10	183	378
JAN/FEB/MAR	15	91	47
APR/MAY/JUNE	30	67	201

GOALS AND ACTUAL NEW CLUBS CUMULATIVE



GOALS AND ACTUAL MEMBERS CUMULATIVE



DROPPED CLUBS: 6 DROPPED MEMBERS DECEASED 7 CLUB CANCELLED 122 OTHER 617 TOTAL 746	93 CLUBS OF 156 ADDED 1 OR MORE NEW MEMBERS CLICK HERE FOR CUMULATIVE MEMBERSHIP DATA	GENDER DISTRIBUTION MALE 2,433 (67.87%) FEMALE 1,152 (32.13%)
	TOTAL FAMILY UNIT MEMBERS 2,130 FAMILY MEMBERS PAYING HALF DUES 1,300	